

# MACHINE & ENGINE DEGREASER



**SPECIALIST**

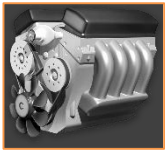
**AUTOMOTIVE**

WD-40 Specialist Automotive Machine & Engine Degreaser is a powerful degreasing solvent. The deep penetrating formulation effectively removes tough grease, oil, dirt, tar, adhesives and more.

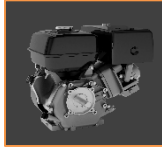
## FEATURES AND BENEFITS

- Removes tough grease, oil, dirt & grime
- Fast acting
- Easy to wipe off and rinse with water

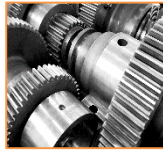
## APPLICATIONS



ENGINE



STROKE ENGINE



INDUSTIRAL MACHINERY

## DIRECTIONS

1. Ensure the engine is turned off and is cool.
2. Cover carburetor, intake systems, exposed electrical and electronic components with water proof sheets.
3. Shake can well then spray generously on cool and dry engine. Make sure to cover all dirty and greasy surfaces. Allow to soak for 5 to 10 minutes.
4. Brush unusually heavy deposits to break up grease and dirt. Rinse off with water.
5. Remove water proof sheets. Start engine and remain idle for 10 minutes to allow engine to completely dry.
6. Use WD-40® Multi-Use Product to drive out moisture and protect parts after cleaning.

## PHYSICAL AND CHEMICAL PROPERTIES WITHOUT PROPELLANT

Appearance	Clear Liquid
Smell	Mild petroleum/ solvent odor
Flash Point	43°C
Boiling Point (initial)	160°C
Specific Gravity	0.775
pH	Not applicable
Solubility in Water	Negligible in water
Pressure	42 PSI

## NOTE

The data contained herein are furnished for information only and are believed to be reliable. We cannot assume responsibility for the results obtained by others over whose methods we have no control. **WD-40 Company specifically disclaims all warranties expressed or implied, including warranties of merchantability or fitness for a particular purpose, arising from sale or use of WD-40 Company products and disclaims any liability for consequential or incidental damages of any kind. Including lost profits.**

